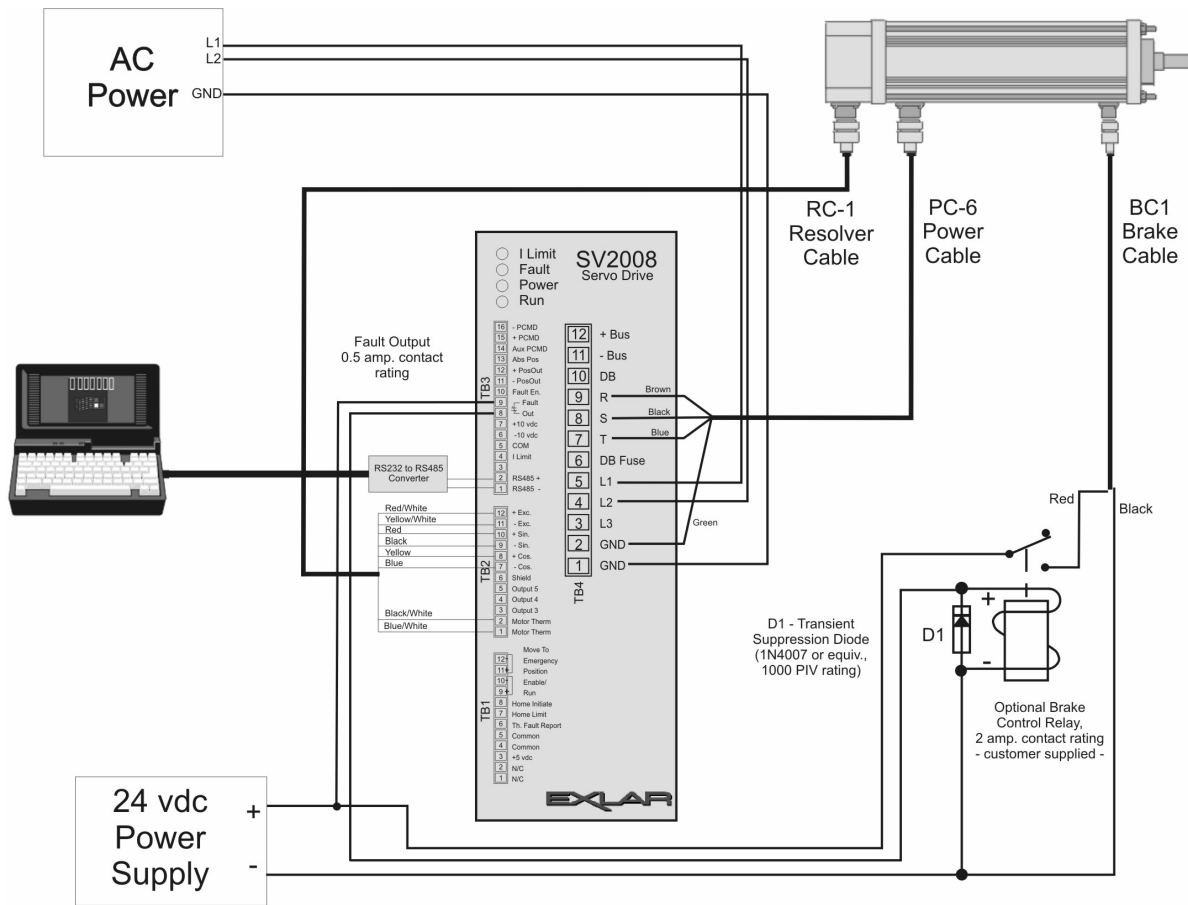


7.5 Exlar SV Series Drive with GS/X Series Actuator



FOR DETAILED INSTRUCTIONS ON SETTING UP THE SV SERIES DRIVE SEE EXLAR'S SV SERIES INSTALLATION AND CONFIGURATION MANUAL.

Motor Cable PC6-AC-XXX			
Exlar Connector	Wire Color	Function	SV2000 terminal
A	Brown	R Phase	TB4-9
B	Black	S Phase	TB4-8
C	Blue	T Phase	TB4-7
D	Green/Yellow	GND	TB4-2

7.5 Exlar SV Series Drive with GS/X Series Actuator (cont'd)

Resolver Cable RC1-AC-XXX			
Exlar Connector	Wire Color	Function	SV2000 Terminal
E	Red/White	Exc+	TB2-12
R	Yellow/White	Exc-	TB2-11
H	Red	Sin+	TB2-10
F	Black	Sin-	TB2-9
S	Yellow	Cos+	TB2-8
G	Blue	Cos-	TB2-7
N	Black/White	Motor Therm	TB2-2
U	Blue/White	Motor Therm	TB2-1

Brake and Limit Switch Cable BC1-AC-XXX			
Exlar Connector	Wire Color	Function	SV2000 terminal
A	Blue	+24 vdc	n/a *
B	Yellow	24 v GND	n/a *
C	Red/White	Lim Sw +	n/a *
D	Yellow/White	Lim Sw -	n/a *
E			
F	Black	24V GND	24 VDC Brake Supply Ground
G	Red	Brake+	Brake Control Relay contact
H			

n/a * - SV2000 has no limit switch inputs.

EX4 Resolver Feedback (17308) with Brake				
Actuator	Connector	P/N	Cables	Cable Desc.
GSX30/30	O/M	10221	PC6/PC1	Stator
		10220	RC1	Feedback
		11028	BC1	Brake
GSX40	O/M	14480	PC7	Stator
		10220	RC1	Feedback
		11028	BC1	Brake
GSX50	O/M	14480	PC7	Stator
		10220	RC1	Feedback
		11028	BC1	Brake
GSX60	O/M	12328	PC3	Stator
		10220	RC1	Feedback
		11028	BC1	Brake